



## Old Wesley Collegians Association...keeping you informed

June 2009 Issue

### DATES FOR YOUR DIARY

Fri 19 Jun	St Kilda Road 1999 Alumni Reunion Drinks
Sat 20 Jun	Elsternwick Campus - Trivia Night
Mon 22-26 Jun	Glen Waverley Campus – The Wall Project
Wed 24 Jun	Elsternwick Campus - Jewellery Making
Fri 26 Jun	Glen Waverley 1999 Alumni Reunion Drinks
Sun 28 Jun	“Twilight Fancies” in the Chapel
Sun 19 Jul	Wesley College Song Book Launch
Fri 24 Jul	St Kilda Road 2004 Alumni Reunion Drinks
Fri 31 Jul	St Kilda Road 1979 Alumni Reunion Dinner
Tue 25 Aug	Foundation Business Breakfast (Advance Notice)

Please note that although every effort is made to provide accurate information on events, we recommend that you contact event organisers to confirm details.

### MESSAGE FROM THE PRESIDENT OWCA

Dear Alumni

I hope you enjoy our second edition of the OWCA Newsletter and that you find it of interest.

I am very much looking forward to the Wesley College Song Book Launch on Sunday 19 July at the Melbourne Recital Centre. It is sure to be a fantastic afternoon, and I hope to see many of you there, singing the School Songs with pride.

Scott Wagstaff (OW1975)  
President OWCA

### ELSTERNWICK CAMPUS - PARENT ASSOCIATION PURPLE & GOLD “TRIVIA NIGHT”

Saturday 20 June 2009, 7.00pm – 11.00pm  
Fitchett Hall, Elsternwick Campus

#### BACK BY POPULAR DEMAND!

The evening will be hosted by the legendary Mark Fine - radio announcer on SEN, sports broadcaster, author and journalist, as well as trivia aficionado, it is sure to be a fantastic night!

If you are interested in coming, but are unable to put a table together (8-10per table) please contact the coordinators and they will match you up with a winning team! Entry cost of \$20 per person includes coffee, tea and chocolates!

BYO picnic dinner and drinks OR Purple & Gold will have drinks and pre-ordered food hampers available for sale on the night. (Glasses will be supplied).

For more information or a booking form please contact Natalie Fine on email [elsternwickpurpleandgold@wesleycollege.net](mailto:elsternwickpurpleandgold@wesleycollege.net)

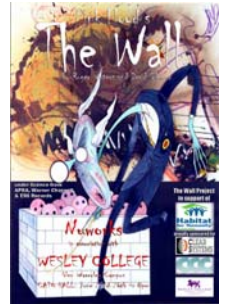
All are welcome!

### GLEN WAVERLEY CAMPUS - THE WALL PROJECT

Monday 22 June – Friday 26 June  
Cato Hall, Glen Waverley Campus

Featuring the musical theatre staging of Pink Floyd's The Wall. The Wall Project is a charitable initiative between Nuworks Theatre and Wesley College.

It focuses on a mix of past and present students, as well as members of the community to raise funds for the Habitat for Humanity to rebuild and enlarge the school in the village of Turabai in Afghanistan.



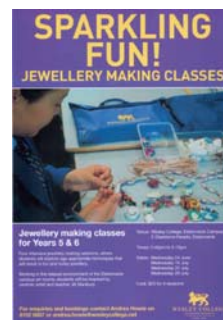
The central idea of The Wall focuses on the human tendency to build walls, both emotionally and physically, between ourselves and others whose ideologies seem to differ too widely from our own.

Tickets can be purchased from [www.ticketmaster.com.au](http://www.ticketmaster.com.au)

Cost: Adults \$35 Student/Pensioner \$20

### ELSTERNWICK CAMPUS - JEWELLERY MAKING

Wednesday 24 June, Wednesday 15, 22 and 31 July 3.45 – 5.15pm  
Elsternwick Campus



Available to all children in Years 5 and 6. Four intensive jewellery making sessions where students will explore age appropriate techniques that will result in fun and funky jewellery!

Working in the relaxed environment of the Elsternwick campus art rooms and inspired by ceramic artist and teacher Jill Stanbury.

Cost: \$25 includes four 1.5 hour sessions.

For bookings and enquiries please contact Andrea Howie on 03 8102 6807 or [andrea.howie@wesleycollege.net](mailto:andrea.howie@wesleycollege.net)

### “TWILIGHT FANCIES” IN THE CHAPEL

Sunday 28 June, 6.30pm  
Wesley College Chapel, St Kilda Rd Campus

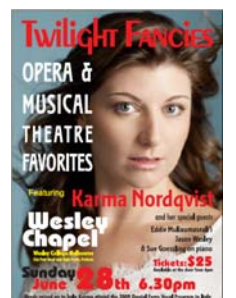
Wesley College is proud to announce that Karma Nordqvist (Rennie) (OW1991) is coming back to perform her show, Twilight Fancies, in the Chapel. Karma will be accompanied by Eddie Muliaumaseali'i, Jason Wasley and Sue Goessling on piano.

Karma's show is full of opera and musical theatre favourites for all!

Tickets will be selling for \$25 per person and available at the door from 6.00pm.

All funds will go to help Karma attend the 2009 Daniel Ferro Vocal Program in Italy.

For enquiries please contact OWCA Office on 03 8102 6353.





## WESLEY COLLEGE SONG BOOK LAUNCH

**Sunday 19 July, 4.00pm**  
**Melbourne Recital Centre**

Join the Wesley Community for a once in a lifetime opportunity to celebrate the official launch of the fourteenth edition of the Wesley College Song Book.

**Tickets:** Adult \$23 Student \$16

Bookings and enquiries online at [www.melbournerecital.com.au](http://www.melbournerecital.com.au) or by phone on 03 9699 3333

**Performers will include:**

Paul Grabowsky (OW1975), Amy Valent (OW1991), Sophie Raymond (OW1991), Mark Stephens (OW1965), Hoang Pham (OW2002).



**Alumni Choir:**

If you would like to sing in the alumni choir, please contact the Head of Music at St Kilda Road campus, Margaret Arnold, on 03 8102 6203 or email [margaret.arnold@wesleycollege.net](mailto:margaret.arnold@wesleycollege.net)

A rehearsal will take place on Monday 13 July in Adamson Hall between 5.30 – 6.30pm.

For all other enquiries please contact Dennis Freeman, Head of Marketing and Communications on [dennis.freeman@wesleycollege.net](mailto:dennis.freeman@wesleycollege.net) or 03 8102 6300.

## FOUNDATION BUSINESS BREAKFAST

**Tuesday 25 August, 7.30am**  
**Hilton on the Park**

I am pleased to announce that the Leader of the Opposition, **Hon Malcolm Turnbull MP**, will be our speaker at the Wesley Foundation Business Breakfast on Tuesday 25 August. The function will be held in the newly renovated Grand Ballroom, Hilton on the Park, Wellington Parade, East Melbourne.

An invitation will be emailed shortly to all alumni. To register your interest, particularly for corporate tables, please contact Maddie Felder at [maddie.felder@wesleycollege.net](mailto:maddie.felder@wesleycollege.net) or **03 8102 6492** as soon as possible.

Jack Moshakis (OW1973)  
Executive Director Wesley Foundation

## ENROLLING AT WESLEY COLLEGE

It is important to enrol your children early...

Priority is given to the children of Old Collegians and siblings of current students when positions are allocated two years prior to the preferred year of commencement.

If you wish to take advantage of this special status for 2012 commencement please ensure the Admissions office receives your application before November this year.

The Admissions office would love to help you with any questions you may have. Please phone; 03 8102 6808 - Elsternwick campus  
03 8102 6508 - Glen Waverley campus  
03 8102 6108 - St Kilda Road campus

## TRIENNIAL REVIEW PROCESS OF STRATEGIC PLAN 2004 - 2016

Message from Tina Dixon - Strategic Planning

As consultation and feedback loops are an essential component of the review process, I would like to invite you to comment on two aspects of the plan - Vision and Values statements and the Strategic Plan framework. A pdf document is available online for you to review and reflect upon at the following link; <https://intranet.wesleycollege.net/v3/app1/files/Strategic%20plan%20framework%20diagram%20LANDSCAPE.pdf>

Your contributions/feedback and observations may include positive affirmations, suggestions for improvements, challenges to be addressed, and considerations for the future. Comments may be submitted by **Friday 26 June** on telephone 03 8102 655, email [tina.dixon@wesleycollege.net](mailto:tina.dixon@wesleycollege.net) or hard copies sent to;

Wesley College  
Tina Dixon - Strategic Planning  
620 High Street Road  
GLEN WAVERLEY VIC 3150

## MESSAGE FROM WESLEY COLLEGE ARCHIVES

Wesley College Archives welcomes donations of historical material as we are keen to fill in the gaps resulting from the 1989 fire. We are also very happy to assist with Wesley family research.

For further information please contact Kenneth Park or Margot Vaughan on 03 8102 6290 or email [archiveuser@wesleycollege.net](mailto:archiveuser@wesleycollege.net)

Kenneth W Park

## UPCOMING OWCA EVENTS

**Friday 19 June**  
St Kilda Road 1999 Alumni Reunion Drinks – Cato Room

**Friday 26 June**  
Glen Waverley 1999 Alumni Reunion Drinks – The Hawthorn Hotel

**Friday 24 July**  
St Kilda Road 2004 Alumni Reunion Drinks – Holdsworth Pavilion

**Friday 31 July**  
St Kilda Road 1979 Alumni Reunion Dinner – Cato Room

For further enquiries please contact the OWCA Office on 03 8102 6353 or visit website [www.owca.net](http://www.owca.net)